

ANNUAL REPORT 2022

GOOD THINGS
HAPPEN HERE

We Are Stronger Together



CASTLE | SAGINAW
MUSEUM | of COUNTY
HISTORY

500 Federal Avenue * Saginaw, Michigan 48607 * 989.752.2861 * CastleMuseum.org

BOARD OF DIRECTORS & CASTLE MUSEUM STAFF

We are eternally grateful for the support of our Board of Directors and efforts of our staff for continuing our mission of sharing Saginaw County history and working to expand our community connections. We are stronger together.

BOARD

CHAIRPERSON

BRYAN KONIECZKA

VICE CHAIRPERSON

BRAD JARVIS, PH.D.

SECRETARY

AMY FRENCH, PH.D.

TREASURER

TAMARA CARTER

EXECUTIVE COMMITTEE

CHERYL HADSALL

JACK TANY

DIRECTORS AT LARGE

ROBERT EMRICH D.MIN.

HON. ELIAN FICHTNER

KATHY GONZALES

CHIP HENDRICK

ERLINDA MARTINEZ

DORIAN PHELPS

LARRY RODARTE

DELENA SPATES-ALLEN

RICARDO VERDONI

STAFF

PRESIDENT & CEO

JONATHAN WEBB

VICE PRESIDENT & CHIEF HISTORIAN

THOMAS TROMBLEY

OFFICE MANAGER & ACCOUNTING

ASHLEY ZEHNDER

CHIEF CURATOR

SANDY SCHWAN

ASSISTANT CURATOR

AUTUMN FRYER

CURATORIAL ASSISTANT

ADAM PRIEM

CURATOR OF ARCHAEOLOGY

JEFFREY SOMMER

REGISTRAR

JEFFREY COTTRELL

EXHIBITS COORDINATOR

GEOFFREY PELKEY

OUTREACH COORDINATOR

JENNIFER VANNETTE, PH.D.

MARKETING

KATHERINE ELLISON, PH.D.

EDUCATION COORDINATOR

KRISTI FURTAW

CUSTODIAN & SPECIAL ARRANGEMENTS

BARBARA DEWEY

FACILITIES MANAGEMENT

WAYNE GREENIA

RECEPTION

DEANA COLEMAN

BARRY M. RINDHAGE

JANEEN SCHAEDING

TABLE OF CONTENTS

OUR MISSION

The Historical Society of Saginaw County is committed to serving the community by telling the continuing story of the people of the Saginaw region through exploration, preservation, and presentation of their historical and cultural heritage.

Board of Directors & Castle Museum Staff	2
Word From President & CEO	4
Word From Board Chairperson	5
HSM Lifetime Achievement Award	6
Archaeology	9
Collections & Accessions	10
Exhibits	14
Education	16
Outreach	18
Marketing	21
Jazz on Jefferson	22
Welcome & Farewell	22
Saginaw County Sports Hall of Fame	23
Programs & Partnerships	24
Volunteers	26
Central Michigan University Interns	27
Vistors & Finance	28
Memorial Donors	29
Grants & Additional Support	30
General Donors	32
Members	34

A NOTE FROM OUR PRESIDENT & CEO

“There’s no better way to describe our focus over the last 12 months than to say we dedicated ourselves to reaching out and working together with others...”



Greetings Members and Friends of the Historical Society of Saginaw County and Castle Museum of Saginaw County History. Thank you for another year of tremendous support for the important work we do here at the museum, that of preserving, sharing, and celebrating the wonderful history of Saginaw County.

If I could summarize our 2022 year at the Castle Museum of Saginaw County History in one word, the word I would choose is “collaboration.” According to the Miriam-Webster dictionary, to collaborate is “to work jointly with others or together, especially in an intellectual endeavor.” There’s no better way to describe our focus over the last 12 months than to say we dedicated ourselves to reaching out and working together with others, not only to benefit our organization, but also to the mutual betterment of many other individuals and groups throughout our area.

Whether through collaboration with institutions of advanced learning, such as Saginaw Valley State University, Delta College, and Central Michigan University, or offering programs to the elderly in assisted living and those with special needs, or working with public and private schools - preschool through K12, we have developed educational programming and exhibits to meet the needs of all our county residents. We pursued this through expanded hours and evening programming at the museum, development of brand-new programs, our *Time Machine: Mobile Museum Experience*, superb traveling and organically developed exhibits, and a host of other new approaches, as we embrace our changing times and technology.

We collaborate, whenever possible, with other historical entities in our area, including the Saginaw County Sports Hall of Fame, the Michigan Heroes Museum, and local historical museums in Bridgeport, Chesaning, Frankenmuth, and St. Charles. In an effort to ensure that we are documenting the stories of all Saginaw County residents, we instituted a new outreach program where we traveled with laptops and scanners to Teymouth Township, Birch Run Township, and the Saginaw County Fair to collect/scan photographs brought in by local residents, resulting in hundreds of new additions to our collection. This wildly successful program will continue and travel to new locations each year.

We also feel that an important part of collaboration is being a good neighbor. Therefore, we share our building and resources with as many local organizations as possible. From Leadership Saginaw to the Young Professionals Network, Saginaw County Chamber of Commerce, Jazz on Jefferson, and the Korean War Veterans Association, just to name a few, we work closely together with numerous local organizations to assist them in any way we can. In addition, our staff members collectively give of their own time as volunteers, in too many organizations to list. We realize that by giving to and strengthening our neighbors, we all rise to new heights.

Thank you again, and we look forward to collaborating with YOU in 2023.

Jonathan Webb

“Advocate: a person who publicly supports or recommends a particular cause or policy. A champion. A backer. A promoter.”



A NOTE FROM OUR CHAIRPERSON

As a member of and as the chair of the Board of Directors, I like to think of myself as an advocate for this museum, and I believe the rest of the Board would share this sentiment for themselves, too. It is part of our job as Directors to promote the museum, whenever possible, to the community at-large about the wonderful stories waiting to be told at the Castle.

Often, I am approached via a phone call, an email, or even stopped on the street by folks who recognize that I am affiliated with the museum. They will ask about the museum in general, but will then quickly ask: “do you think the museum might be interested in this?” as they begin to tell a story about a family member and object that they have in their possession.

What strikes me is there are almost an infinite number of stories about our past as a community and about those that have come before us. I enjoy listening to these shared stories, and I almost always encourage the person sharing with me to contact the museum, whether they have artifacts to donate or not.

I like to share with these individuals who may be hesitant to part with family heirlooms, one of the most exciting new projects the museum kicked-off in 2022. It is an effort to document historical photographs from throughout the county by creating a digital archive of historical images currently held in private collections. The museum, over the course of the next several years, will visit each township in the county and work with the cities, villages, historical societies and libraries to scan images from local residents and then return the originals to residents. Stories will be documented as well and thus enhance the history of Saginaw County.

This is just one way in which the museum is working to collaborate within the community to bring stories to light that may have gone untold. I look forward to the coming year and all of the new discoveries that will help strengthen and deepen our understanding of our past here in Saginaw County. When we work together – as advocates, as champions or as promoters of this institution – great things can and will happen.

Bryan Konieczka



HISTORICAL SOCIETY OF MICHIGAN LIFETIME ACHIEVEMENT AWARD

This past year, Thomas Trombly, Vice President and Chief Historian of the museum received the Michigan Historical Society's capstone award—the 2022 Lifetime Achievement Award. Tom accepted this award at the group's annual history conference in Albion.

According to the HSM, "each year, the Historical Society of Michigan presents State History Awards to individuals and organizations that have made outstanding contributions to the appreciation and understanding of Michigan history. The awards...recognize the excellence of achievement by an individual or organization in the collection, preservation, and/or promotion of state and local history."

"I feel so fortunate to have been able to study, help preserve and share Saginaw County's history. Although I revel in each new discovery, the thing I am most passionate and proudest of is sharing

local history and using the past as a tool for today as the future," Tom said.

Tom started his career at the museum in 1981 as curator of collections, later working for Neighborhood Renewal Services of Saginaw, which focused on the rehabilitation of Saginaw's historic homes. In 2009, he returned to the museum.

According to Tom, "the fact that I have spent a career focusing on Saginaw County's history reflects on the richness of the community's heritage. And, more importantly, people's desire to explore and learn about it."

Around Saginaw, Tom is a regular presenter for various organizations and oversees the Jazz on Jefferson event with several community partners. He was honored with a reception at the museum in November.



Museum Board Treasurer Amy French, Ph.D., Thomas Trombly, and Board President Bryan Konieczka inside the Castle Museum.

"As I reflect on this award, I can't help but think-Saginaw is a really special place."



“Our surface survey in Chesaning Township was prompted by a collection of artifacts recently donated to the Castle Museum.”

The Castle Museum’s Archaeology team has had yet another busy and productive year! Our fieldwork activities included surface survey in Chesaning Township, survey and monitoring archaeological sites in the Shiawassee National Wildlife Refuge, and a return to a possible boarding house location where we conducted shovel-testing and test excavations. In the lab, we have been busy processing and cataloging artifacts resulting from our fieldwork and from recent donations. We also recorded several previously undocumented archaeological site locations based on donated collections.

Our surface survey in Chesaning Township was prompted by a collection of artifacts recently donated to the Castle Museum. The collection is archaeologically valuable because the donor assigned numbers to the artifacts corresponding to mapped site locations. Our survey was an effort to determine if one of the locations was a “new” site, or simply an extension of a site previously recorded in the State’s archaeological site file.

ARCHAEOLOGY



A typical Shovel Test Pit.

In one of the Shovel Test Pits, we encountered a dense concentration of ceramics, glass, animal bone and other debris. We chose this location to open a 2 X 2 meter excavation block. The excavation revealed an abundance of, mostly fragmentary, artifacts. This included structural material such as brick, plaster/mortar, nails, and window glass; domestic/kitchen-related material including glass and ceramic dishes, eating and serving utensils, bottles, cans, lamp chimneys, eggshells, and butchered animal bones; and a few personal items including buttons, a buckle, a decorative pin, and smoking pipe fragments. The ceramic assemblage includes plates, platters, bowls, cups, pitchers, a sugar bowl lid, and even a flower pot. Glass vessels include “pepper sauce” bottles, a beer bottle, and a salt dip.

We are still in the early stages of analysis, but, so far, most of the artifacts appear to date to the late 19th century – exactly as we would expect for a site related to the Tittabawassee Boom Company. While we still can't say with certainty that we have found a boarding house associated with the boom

company, the evidence is certainly pointing in that direction.



Opposite Page: Archaeologists Nick Bacon and Monte Lawton hard at work in Chesaning Township.

This Page: Artifacts exposed in the excavation block.

“Collections are what make museums unique. Museum collections are more than objects; they are carefully chosen assemblages, the product of a curatorial way of knowing.”

**-Steven Lubar, Professor of American Studies, Brown University
“Museums Need Collections and Connections”**



Vescio's Sheridan Plaza Store

COLLECTIONS & ACCESSIONS

Collecting is an integral component of the definition of a museum and objects or Artifacts – “things” - are at the center of the Castle Museum of Saginaw County History’s mission. Each of the items we accept and add to the museum’s collection tells a unique Saginaw County story.

What follows are a few of the numerous objects that were accepted during 2022. Although representative of the diversity of objects collected, this is simply a selection from the dozens of items that were donated during 2022. It is not a comprehensive listing. However, each of the items listed below and the items that are not included on the list connect us with a special Saginaw County story.

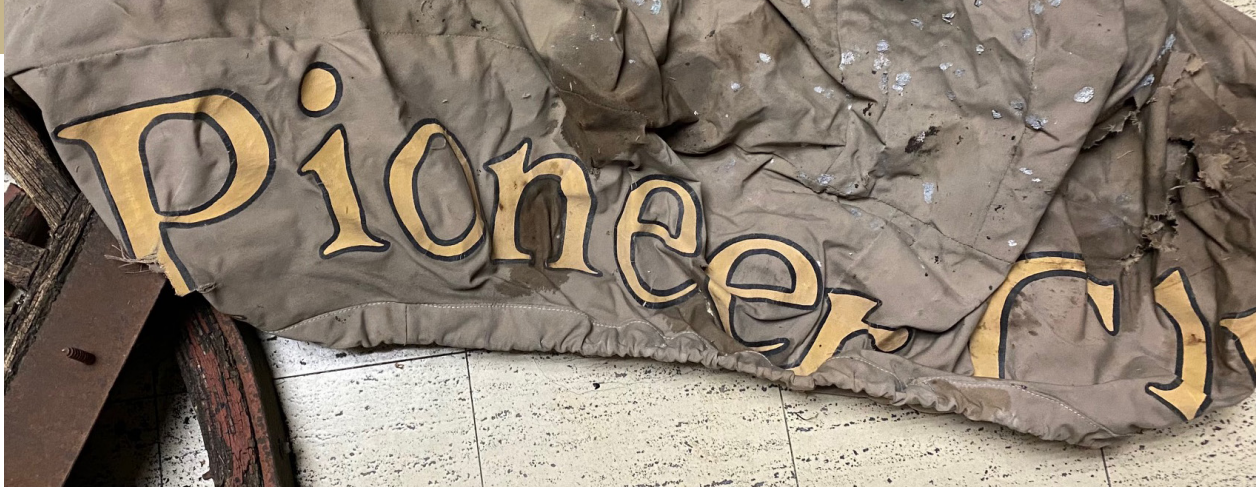
If you have visited the museum recently or use our online resources, you will note that some of the 2022 items are already starting to appear in stories and exhibits.

Vescio Collection: Photographs and ephemera documenting the life stories of Ralph and Palma Vescio and the supermarket chain the family developed. Included in the collection are photographs of the family’s first store at 1317 Wadsworth, images of the family and the development of the chain of supermarkets operated by their sons, Nick and Louis Vescio. When the chain’s Sheridan Plaza store opened in 1962, advertising proclaimed: “From the moment you pass under the sign that says ‘Welcome to Vescio’s,’ you know you are in a store that appreciates your patronage.”





Fragments of the Pioneer Club Sign: Sometimes objects that are in “rough” condition connect us with multiple chapters of Saginaw’s rich history. For generations the distinctive marquee in the shape of a covered wagon marked the entrance to Saginaw’s Pioneer Club. The organization, founded in 1856, changed its name from the Teutonia Society to the Pioneer Club during World War I. The organization’s home at 417 Court Street was destroyed in the June 27, 1991 fire that started in the Fordney Hotel. Salvaged from the ruins, the pieces of this marquee still show scars from the conflagration.



Bookcases Manufactured by the Brueck Sectional Bookcase Company:

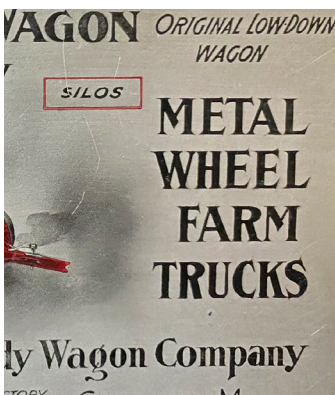
At first glance, these appear to be ordinary sectional bookcases, the type manufactured by many companies in the early twentieth century and readily available at any antique shop. However, these were manufactured in Saginaw by Brueck Sectional Bookcase Company. Formed in 1906, the company was incorporated in 1915. The firm advertised that

they produced other small items such as ironing boards. By 1917, newspapers reported the firm was being reorganized as the Saginaw Sectional Bookcase Company. It closed a few years later.



Collection of Ephemera From Saginaw Businesses:

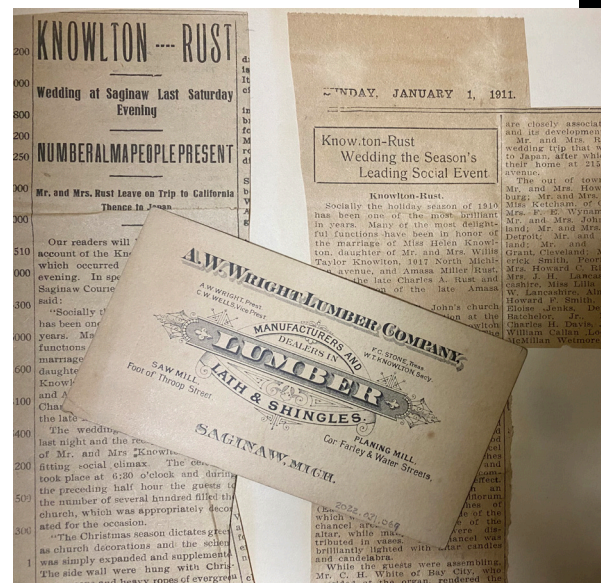
A collection of advertising items that had been carefully collected, organized and researched by its donor was given to the museum. Although each of the items in this collection was once considered disposable, each piece is now an irreplaceable connection to a story of a Saginaw business or resident. And the story of each business has been carefully documented by the donor.



MORE COLLECTIONS & ACCESSIONS

Archival Collection Documenting the Rust, Knowlton and Kessel families:

Centering on the families of Amasa and Helen Knowlton Rust, this collection richly documents the lives of several families who prospered during Saginaw's lumber boom. Rich with photographs, albums, letters and documents, this archive captures the details and flavor of Saginaw society in the early twentieth century. A newspaper clipping in Helen Knowlton Rust's bride's book notes: "Socially the holiday season of 1910 has been one of the most brilliant in years. Many of the delightful functions have been in honor of Miss Helen Knowlton, daughter of Mr. and Mrs. Willis Taylor Knowlton, 107 North Michigan Avenue and Amasa Miller Rust, son of the late Charles A. Rust and only grandson of the late Amasa Rust.



Panoramic Photographs of Workers of E.A. Robertson Company: Taken by the Goodridge Brothers, the Castle Museum's collection already includes a nearly identical copy of this July 18, 1911, image. Taken on the same day, at the same location, this copy only varies in one important detail – it captures an entirely different group of the firm's employees. In 1915, wages at the E. A. Robertson Company, a manufacturer of women's garments, averaged \$8.00 per week.

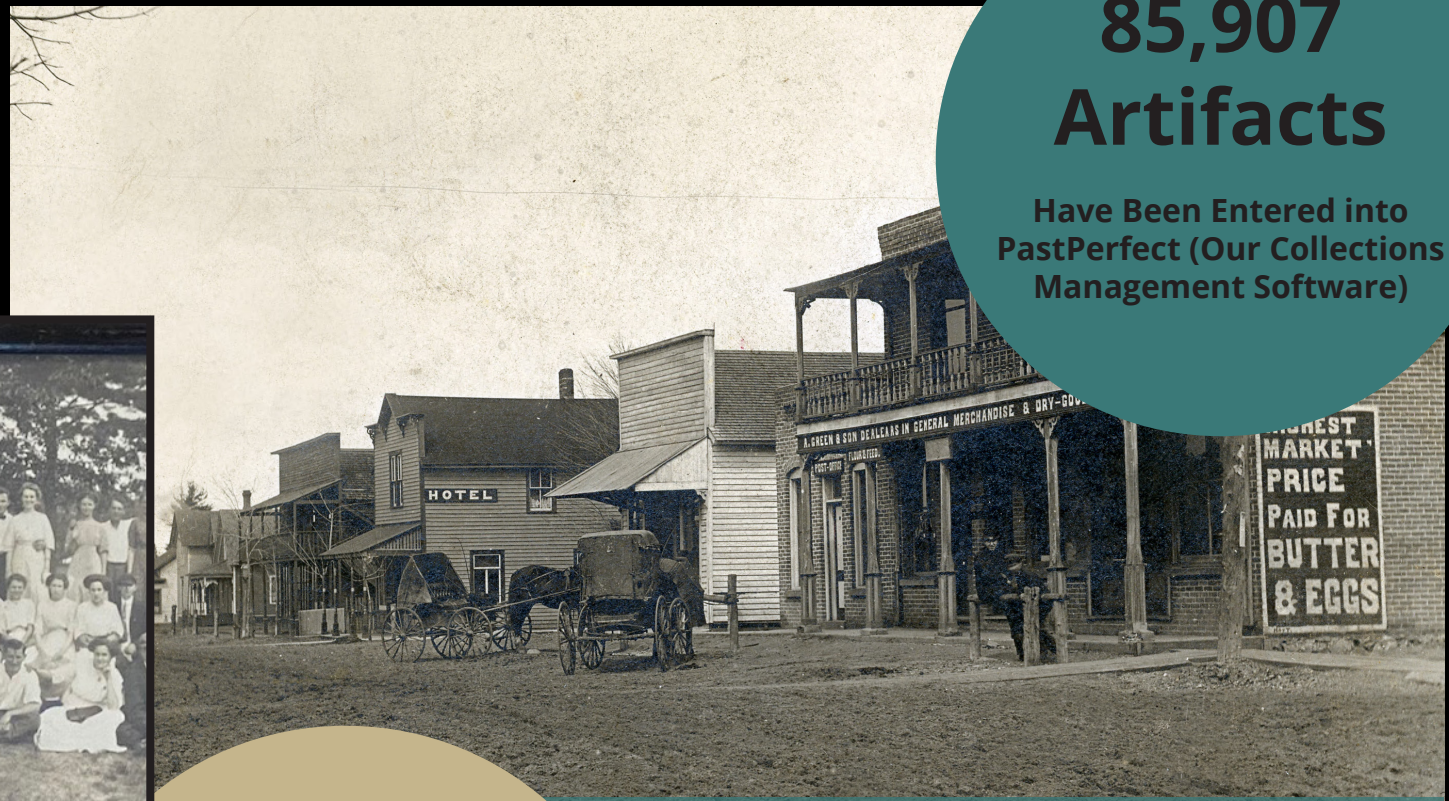
CHRONICLING OUR PAST

The Castle Museum kicked off its historical photograph scanning project, **Chronicling Our Past**, in April 2022. The project is an effort to create a digital archive of historical images currently held in private collections throughout Saginaw County. This digital archive will not only enable these images to be preserved along with the stories they convey, it will also enhance our understanding of our county's history thus enabling us to tell a more inclusive story at the Castle Museum.

During the first year of our Saginaw County Photograph Scanning Project, we visited 3 sites (Taymouth Township, Birch Run Township and the Saginaw County Fair) during which time we scanned over 2,000 images as well as other archival material from throughout the county.

**85,907
Artifacts**

Have Been Entered into
PastPerfect (Our Collections
Management Software)



Main Street, Burt, Michigan.
Original photo owned by Frank Sauder. Taymouth Township.

**2,648 New
Artifacts**

Were Entered into
PastPerfect in 2022

**Over 135 donors donated
over 500 individual artifacts
as well as collections of
artifacts in 2022.**

EXHIBITS

Working with many members of the community, we opened diverse exhibits in 2022. We brought Saginaw stories into national frameworks. In the summer, we shared a national traveling exhibit, Celebration of Souls, and paired it with ofrendas created by Saginaw residents. We also partnered with Delta College and presented an exhibit of national and local women inventors on Delta's campus.

Centennial Hall:

A Celebration of Souls

(Reinstallation) A Wider View of Saginaw: Goodridge Brothers

Home Ice: Saginaw Scores Professional Hockey

West Gallery:

Saginaw History as Art: The Work of Jean Beach

Buzz Morley Gallery:

Architectural Fragments

Alcoves:

New Reformation Jazz Band

Sonny Stitt

Roethke Floral Company



Lobby:

What We Wore: Edwardian Era Clothing & Accessories
Guest Curated by Allison Nemeth-Freeland High School (Senior)

A Smile Says It All: Carousel Display

Rookie: Remembering Badge No. 131

Rear Entrance:

Unity Park Soldier Statue Display

Delta College:

Women's History Smithsonian Poster Display

Other Installations:

Dock Entrance Greeting Video

Hosted Heritage High School Photography Club Exhibit titled
"Made in Saginaw"

Continued to work with Saginaw County Parks and Recreation
on interpretation for Malleable Iron Site



EDUCATION

THE TIME MACHINE & MORE

OUR 2022 PARTNERS

DELTA COLLEGE LEARNING CHANNEL

We worked to create a virtual fieldtrip and Michigan history lessons for 3rd graders as well as partnering on several STEM lessons and events with Lauren Saj.

MID-MICHIGAN CHILDREN'S MUSEUM

We partnered on aspects of their STEM, magic, and archeology summer camps, did a STEM lesson with them and mutually promoted each other's programs.

READ ASSOCIATION

READ passed out free books at our summer kickoff event and we did a reading activity during DEAR@the Zoo.

MID MICHIGAN OLD GAS TRACTOR ASSOCIATION

MMOGTA setup our gang saw for demos and cut boards for museum displays. We also setup and maintain displays at the Old Gas Tractor Show and provide instruction and tours for Rural Education Day.

SAGINAW COUNTY FAIR

We setup a booth and educational display in the main barn and museum staff, Sandy Schwan and Tom Trombley judge the antiques.



"The fur trading presentation is incredible. I am excited to see the lumbering one we also have scheduled..."

- School Teacher, Freeland

SCHOOLS VISITED:

SAGINAW PUBLIC
FREELAND
CARROLLTON
MERRILL
NOUVEL
BIRCH RUN
SAGINAW TOWNSHIP
GRACE CHRISTIAN
BETHLEHEM
PEACE LUTHERAN
FRANKENMUTH

Total Number of
Tour and Event
Participants at
the Castle in 2022:

1,600



Total number
of people
impacted by
off-site visits
and events:
57,656



"Thank you! As always Kristi is an invaluable resource and her content greatly enhances Michigan Social Studies Standards."

- School Teacher, Carrollton

OUTREACH: SHARE, SUPPORT, AMPLIFY

This year was a year of partnership and collaboration. We worked to not only tell our stories to the community, but also to support the efforts of local institutions through shared programming, exhibit support, and participation in community events. We increased our online engagement across multiple social media platforms in addition to our website, and we used our online presence to amplify the work of our county neighbors.

Traditional programs such as **Lunch & Learn** and our summer **Cultural Celebrations** remained strong. Lunch & Learn featured a variety of presentations on topics ranging from musicians to science and technology history to prominent Saginawians and more. Over 450 attended presentations in person and online this year. Cultural Celebrations brought folk music, Japanese tea ceremony, African dance and drumming, and Dia de los Muertos traditions to the Castle along with 74 total audience members.

We also tried new programming, including **History After Hours**, **Museum Mingle**, **Museum Play Dates**, and a food history class. **History After Hours** is similar to Lunch & Learn but takes place on third Thursday evenings so those who have work or school can attend. This kicked off in April with environmental historian Brittany Fremion from Central Michigan University and then enjoyed monthly presentations by a wide variety of experts in their fields, including a presentation on women, civil rights and bartending by Castle Museum Board Treasurer Amy French. We had a total audience of 65 over seven presentations. The Midland County Historical Society shared vintage toys and yard games at our first **Museum Play Date**. We reciprocated by participating in their annual Halloween Bash, where we gave out over 400 museum passes to encourage new visitors.

Museum Mingle opened the door to collaboration with area music students and others. On first Thursdays we offered museum visitors the opportunity to enjoy the museum with live music. Many of our performers are from Saginaw Valley State University, giving the music majors a chance to work professional gigs. We were also lucky enough to have Argentine pianist Agustin Diego Echevarría play a special Mingle in August. In December, the band, orchestra, and choir students from Heritage High School provided festive music.



We hosted many **community groups** this year who used the space in different ways. **SCC Graphics Class** learned the art of portraits with models from Beauty In Me modeling group. **The Saginaw Youth Ambassadors** learned the community's history by touring and speaking with museum educators. **Outreach Coordinator Jennifer Vannette was honored by the group at their Junior Leadership Graduation with the Leaders Who Influence Award.** Other partner groups continued to use the museum for meeting space including the Pages of History Book Club, the Origami Club, the Miniatures Group (who provide our beautiful Fairy Doors), and the Frankenmuth-Saginaw Korean War Veterans Association Chapter 251.

Adult and teen tours picked up this year, and Tom Trombley also offered walking tours in conjunction with Friday Night Live. We served 630 adults on tours this year (this does not include school field trip tours). Thanks to the return of adult tours, we also rebooted our **docent program**. We now have several trained and active docents to help lead tours. We were able to serve our senior community by visiting senior living centers and providing history programming. In the fall, Wellspring began to bring a bus of residents to some of the Lunch & Learn presentations.

We hosted youth **STEM Days** presented by the **Delta Learning Channel** and **Mid-Michigan Children's Museum**. Those were so popular that adults wanted STEM too so **SVSU Physics** obliged by offering a STEM Day on optics to pair with the Goodridge Brothers Panoramic Views exhibit. We also brought **table displays to many community events** including: the International Peace Walk, a Saginaw Spirit game, Saginaw Valley Rotary Club, Juneteenth, the Saginaw County Fair, and the Mid Michigan Old Gas Tractor Association (MMOGTA). Several staff and docents returned to MMOGTA to help with **Rural Education Day**.

We had new artistic collaborations this year as well. **Good Harbor**, the production company for the independent film **Red's Shadow**, selected the Castle Museum to serve as multiple sets for the movie. It was exciting to see what goes into creating a film. The staff enjoyed attending the premiere together. **Delta Learning Channel** also filmed in the museum this year, and created a new virtual field trip sharing the history of Saginaw County. Outreach Coordinator Jennifer Vannette helped craft the script along with Education Coordinator Kristi Furtaw, who also worked with Delta to create companion teacher resources.



WEBSITE AND BLOG

We used our website to dive deeper into histories, and connected those stories through our social media. Our most popular posts have been our Saturday Artifacts – a closer look at the history of an object in our collections – and our Sunday historical recipes – recipes from Saginawians, kitchen-tested by our staff. We have also used the blog to collaborate with community partners such as our series on Saginaw scholarship history in partnership with the Saginaw Community Foundation.

Popular community highlights included an interview with Ana Sanchez who contributed an ofrenda for our exhibit “A Celebration of Souls.” We were also pleased to share “Saginaw Celebrates the Contributions of Carlean Gill,” who served as Grand Marshall of the Juneteenth event.

Some of the series we explored through our blog were *The Bicentennial of Fort Saginaw*, which included posts on “Establishing the Fort on the Saginaw River,” “Consequences,” and “Lt. Allen,” and *Cocktail Hour*, which included historic drink recipes and posts “It’s 5 O’clock Somewhere,” “Complications of the 18th Amendment,” “Shake, Rattle, & Roll in a New Era,” and “Gone Global.”

We also had some contributions from our Central Michigan University interns, Elijah Sawyer (*Logging Exhibit Inspires Research Questions, Finding the Story Behind a Picture*) and El Webb (*Finding Kimball Homes, Midwest Quirks Make April Fools*).

This past year for Black History Month, we shared a series of linked social media posts detailing the general history of Black History Month and its founder Carter G. Woodson while encompassing the 2022 theme “Black Health and Wellness,” with Saginaw’s Dr. Charles Ellis, Jr.

For Women’s History Month, we also shared a series of linked social media posts detailing Women’s History Month and highlighting Saginaw and Michigan women, including: Agnes Wells, Carrie Saunders, Claudine Wicks, Elizabeth Lehman Belen, Charlotte “Lottie” Wilson, and Margaret Kitchner Stevenson.

SOCIAL MEDIA

facebook

660 Posts Published
1,029,672 People Reached
Top 5 Fan Cities:

Saginaw (2,047)
Shields (338)
Carrollton (283)
Bay City (239)
Freeland (204)

Instagram

432 Posts Published
27, 712 People Reached
8.3% Increase in Followers

twitter

543 Posts Published in 2022
32% Increase in Followers

TOP POSTS 2022

July 20-1 p.m. Facebook

We continue to mark the milestone of the bicentennial of Fort Saginaw with our second post examining the historical consequences of the fort’s presence. Read more: <https://loom.ly/VoVrRB8>
Highest Reach on FB - 24,199 Reached.

Oct. 22-10 a.m. Instagram

Although worn and a little battered, this c. 1890 paperweight is still an effective advertising piece for the long-vanished firm of Lewis C. Slade, a dealer in white pine lumber.

Read more on the Castle Museum blog: https://loom.ly/3_KdXLU

Most Liked on Insta - 276 Reached.



MARKETING



Say hello to our new Castle Museum mascot, Widget!

Widget is a family-friendly addition to the team. Choosing Widget was a very deliberate process. We considered what animals related to the history of our region and can help tell our stories. Once we settled on a beaver, we introduced it on stickers. We decided that the beaver would not be rendered as a "boy"

or a "girl" because we wanted it to appeal to all our young visitors.

We struggled with the name, and had several strong possibilities, so we held a naming contest with museum visitors and "Widget" won. We like that a widget is often a word for a tool, and we think Widget will be useful around the museum. Our goal is that Widget will help to indicate family-friendly events, programs, and interactives at the museum.

In order to make that happen, we needed illustrations to personalize many poses. Thanks to Catch-A-Fire, a network of volunteers made

available to us through the Saginaw Community Foundation, we were matched with a volunteer illustrator who designed a tee shirt and many poses for Widget, saving us money, but giving us more options. This will give us even more opportunity to share our mascot.



Sept. 17-10 a.m. Twitter

A Recent Donation: A Poster for an Auto Show

The North American Auto Show is being held in Detroit this week. While the vehicles at this event will feature the newest technology and styles, a poster for a 1924 Saginaw show that was recently donated to the museum reminds us that automobile shows have a long history.

Held at the Saginaw Auditorium March 4 – 8, 1924, the event was described on the front page of the March 5, 1924, Saginaw News Courier:

"Saginaw's tenth annual auto show is a worthy successor to those that have gone before."

"The show opened at the Auditorium Tuesday night, to about as large an audience as has ever been turned out for an opening night, in spite of inclement weather. ...and the program of entertainment, centered about the first annual style revue to be given in conjunction with an auto show, surpassed any previous effort in the entertainment line was the freely voiced praise that greeted it."

Most Liked on Twitter.

JAZZ ON JEFFERSON

Jazz on Jefferson returned last June, after a two-year hiatus due to COVID. Several thousand festival goers attended the one-night celebration on June 8, 2022, which featured fun, food, music, and laughter.

As one of the sponsoring organizations of this popular event, the Castle Museum obtains grants and funding to cover the cost of carriage rides, a headline performer, and city services. Also, we obtain permits and coordinate

overall arrangements. Each participating institution arranges for programming at its venue.

Grants were received from The Saginaw Arts & Enrichment Commission, Saginaw Celebrates Summer presented by Hemlock Semiconductor and the Downtown Development Authority. The Public Libraries of Saginaw and other organizations and individuals provided additional support.

Through this unique partnership with the Public Libraries of Saginaw, Kingdom of Life Ministries, First Congregational Church, Team One Credit Union, Freid, Gallagher, Taylor and Associates, Cathedral of Mary of the Assumption, and South Jefferson Avenue residents and stakeholders, each year we are able to showcase the Castle Museum and its neighborhood to several thousand visitors.



WELCOME & FAREWELL

This fall the Castle Museum said goodbye to our team member, Arika Massey. Arika worked as our Marketing Coordinator for just under a year, helping the museum remain visible to the public through advertising and social media. She is now a marketing manager for The Channel Co. We wish her the best in this new opportunity.

The Castle Museum has welcomed a new Marketing Assistant, Katherine Ellison. Katherine is well-known in the region's history circles. She has a doctorate in History, and served as the director for SVSU's Osher Lifelong Learning Institute. Katherine has already hit the ground running, and we are excited to have her join the team.



SAGINAW COUNTY SPORTS HALL OF FAME

The Saginaw County Sports Hall of Fame had a big year. It was our 20th anniversary! We have inducted 20 classes of athletes, teams, contributors, and others who have made sports such an important part of Saginaw County. Headlining the Class of 2022 are two high school teammates who went on to play in the NFL: Charles Rogers and LaMarr Woodley. Also inducted into the Class of 2022 were John Decker, Max Fisher, Mike Boyd, Nicole (Bade) Weirauch, Ron Rummel, and the St Charles football teams from 1961-1965. This was the best attended induction banquet in many years with 510 people at the Horizons Banquet Center on Sunday November 5, 2022.

In October, Vice President/ Curator Jeffrey Cottrell changed out the entire exhibit in the Hall of Fame. Exhibits for 2022-23 include the Class of 2022, High School Memorabilia, National Champions/World Champions, Saginaw High vs. Arthur Hill, a display on bowlers Stanley "Tod" Moskal and Dale Strike, and the 16 MHSAA State Championship trophies in our collection. If anyone



knows where to find a picture of the 1942 Saginaw High boys basketball state championship team, please let Jeff know as he cannot find a team picture anywhere.

This year also saw a change in leadership for the organization. Jack Tany resigned as president in order to stay engaged in his other responsibilities, which include being a county commissioner and sitting on many local boards. His involvement and work on our behalf since the organization's inception cannot be overstated. We wish him well going forward. Another long-time board member, Vice President Jim Petteys decided to take more time with his family, and Secretary Dan Weigl decided to step down to devote more time to other projects. These three people dedicated so much time on behalf of the Saginaw County Sports Hall of Fame that their efforts will not be forgotten anytime soon.



With three of the four executive board members taking a step back, a completely open slate election was held. The board voted Sharon Bade as President, Jeffrey Cottrell as Vice President/Curator, Greg Mallek as Secretary, and Lori Trumble as Treasurer.

Jeff went to the International Sports Heritage Association (ISHA) annual conference at Lambeau Field in Green Bay, Wisconsin. After the conference ended, they asked him to join their Board of Directors. This is a unique opportunity for our organization to have a local person sit on the board of the largest organization for sports heritage. ISHA has membership that ranges from major pro sports teams like the Green Bay Packers, Cincinnati Reds, the College Football Hall of Fame, Women's Basketball Hall of Fame, as well as many halls from Canada, Australia, and the United States.



PROGRAMS & PARTNERSHIPS

FROM YORK, PENNSYLVANIA

Although the Goodridge Brother's photographs preserve unique Saginaw stories, their legacy is recognized nationally and the story of their family is rooted in York, Pennsylvania. In mid-October, the Castle Museum hosted visitors from the Goodridge Freedom Center and Underground Railroad Museum. The visit was arranged and sponsored by the SVSU College of Arts and Behavioral Science.

During their time in the Saginaw area, the guests from the Goodridge Freedom Center and Underground Railroad Museum, Kelly Summerford and Edquina Washington, explored the story of the Goodridge Brothers in Saginaw and helped us better understand the foundations of the Goodridge story in York, Pennsylvania. During the visit the Castle Museum showcased its rich holdings of Goodridge Brothers images and worked closely with our colleagues in the Local History and Genealogy Collection at Hoyt Library and SVSU to share the Saginaw chapter of the Goodridge family story.

We greatly appreciate the SVSU College of Arts and Behavioral Science for making this visit possible and look forward to future partnerships.



2022 Tours and Programs:

- » Saginaw River Marine Historical Society – Bayous, Logs and Mills: The Saginaw River and East Saginaw and Saginaw City, 1857 - 1890
- » DAR – Goodridge Brothers
- » Regional Masonic Meeting – History of Saginaw Masonic Temple
- » Presentation at Westcourt – Fire of 1893
- » Tour in Conjunction with SVRC Marketplace – Architecture of Frantz and Spence
- » Tours of Theodore Roethke Home for Friends of Theodore Roethke
- » Tour in Conjunction with SVRC Marketplace – Goodridge Brothers' Saginaw City Communications Department – Video of Forest Lawn Cemetery
- » SVSU OLLI Program – Landscape History Program
- » Leadership Saginaw – Tour and Presentations
- » Two Tours of Oakwood Cemetery
- » Kochville Township History Presentation at monthly township gathering
- » Saginaw Valley Antique Society – The Goodridge Brothers' Saginaw
- » Two Presentations at Wellspring – The Goodridge Family: Celebrating Connections Beyond Saginaw
- » Presentation at AAUW-Midland – History of Voting Rights
- » Saginaw Youth Ambassadors Program – Tour and History
- » Tours for SVRC clients
- » Tour for Juneteenth Pageant Participants
- » Freeland Women's Study Club – Museum donation process
- » Midland County Historical Society Museum Playdates
- » Taymouth Township Presentation – Czech Americans in Saginaw County and Kraslice Demo
- » Presentation at Edgewood Assisted Living – History of Nutcrackers
- » Presentation at Delta College – Remembering the Saginaw Treaty of 1819
- » Kraslice Class
- » Consuming American History Class

Community Involvement:

- » Downtown Saginaw Association
- » International Peace Walk and Expo
- » Ojibway Island Project Community Conversation host site
- » Technical support for Great Lakes Bay Pride oral history project
- » Staff tour at Hemlock Semiconductor
- » Staff tour at St. Charles Historical Society
- » Staff tour at Bridgeport Historical Society
- » Staff tour at Chesaning Historical Society
- » Staff tour at Cushway House
- » Partnered with Frankenmuth-Saginaw Korean War Veterans Association Chapter 251
- » *Red's Shadow* filmed at the museum
- » Delta Learning Channel – Virtual Field Trip
- » Saginaw County Fair
- » Sandy Schwan served as Artifact Judge for Saginaw County Fair
- » Mid Michigan Old Gas Tractor Association's Annual Show and Rural Education Day
- » Saginaw Valley Chapter of the Michigan Archaeological Society
- » Saginaw County Agricultural Society
- » Saginaw Valley Air Museum

Interviews and Live Broadcasts:

- » Tom Trombley interviewed for CVB Podcast
- » Tom Trombley interviewed by Rod Bieber – Jazz on Jefferson
- » Tom Trombley interviewed by Art Lewis – Jazz on Jefferson
- » Jennifer Vannette interviewed by Rod Bieber – Cultural Celebrations and programs
- » Tom Trombley and Jennifer Vannette interviewed for Review Magazine – Goodridge Brothers and Frederick Douglass
- » Jon Webb interviewed by Phil Eich
- » Jon Webb interviewed for ABC12 & TV5
- » Jon Webb interviewed for Mi Gente on Air

Training:

- » Jon Webb and Tom Trombley attended the American Alliance of Museums Annual Meeting in Boston, MA
- » Jennifer Vannette attended the Michigan Historical Society Conference



Saginaw Youth Ambassadors



Staff Tour of Hemlock Semiconductor



Member Appreciation Event

VOLUNTEERS

Kaki Almirall
Nick Bacon
Anna Bennett
Alyssa Bierlein
Olivia Bruzewski
Monica Brzezinski
Tamara Carter
Deana Coleman
Chase Corknell
Beverly Cottrell
Lillian Cottrell
Walter Czerewko
Dawn Christin
Rich DePlonty
Jim Doane
Dr. Robert Emrich
Pat Evans
Judge Elian Fichtner
Amy French, Ph.D.
Lisa Furtaw
Nolan Furtaw
Scott Furtaw
Kathy Gonzales
Tamara Grefe
Cheryl Hadsall
Kathleen Haucke
Chip Hendrick
Dick Henning
Marnie Higgins
Joan Hirschenberger
Marcia Hoffman
Isaac Hunter
Brad Jarvis
Stephanie John
Dan Kenny
Ron Kinsman
Bryan Konieczka
Tom Lesh
Myrna Little
Marilyn Ludgin
Susan Ludwig
Maria McCarville
Craig Monahan

Debbi Monahan
Samona Perry
Stacy Priem
Thor Rasmusseun
Kathy Reis
Barry M. Rindhage
Rick Rios
Larry Rodarte
Jill Rodriguez
Leo Romo
Sharon Rood
Elijah Sawyer
Janeen Schaeding
Art Schwan
Elaine Schwan
Kim Scofield
Claire Sherry
Sherrill Smith
Quinn Sommer
Joseph Stankiewicz
Jill Stevens
Tom Stevens
Bonnie Stewart
Jack Tany
Matthew Taylor
Les Tincknell
Malachi Vanette
Ricardo Verdoni
Beth Walker
Chris Walker
Pat Washburn
Anne Webb
El Webb
Pat Weslock
Della Wilder
Kay Wilhelm
Marsha Wilhelm
Ken Willman
Shawn Zehnder
Jazz on Jefferson Volunteers
Saginaw Valley Air Museum Volunteers
Saginaw Voyageurs

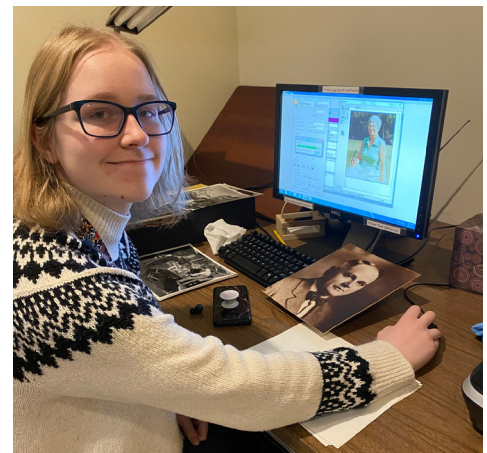
CENTRAL MICHIGAN UNIVERSITY INTERNS

During the winter semester, the Castle Museum hosted three interns from Central Michigan University's museum studies program. During their time with the Castle, they focused on projects that helped us process and interpret objects in the Castle's collections. Also, for each of the students, we developed a project that allowed them to do work at the Clarke Historical Library at CMU that explored that institutions' Saginaw materials and will enable us to connect with these materials.

Isaac Hunter: Focused on the Sport Hall of Fame, cataloguing a variety of objects. Isaac also worked with the Castle Museum's Morley Brothers' photographic collections. Isaac compared each of the images from our holdings with photos that are in the Clarke Library's Morley Brothers archives. Isaac was able to identify images that are parts of sets and duplicated in both collections. This work is the first step in creating a research aid for the Castle Museum's collection that will be shared with the Clarke Library.

El Webb: Focused on cataloguing a wide-variety of new accession. El also worked with the Donald Kimball collection at Clarke Library. Kimball, an architect born in Saginaw, studied at the University of Michigan, and practiced in Saginaw until he relocated to California in the 1950s. The Clarke Library has a large holding of Kimball's drawings. However, few projects are identified by location. El created a database of the drawings and identified the locations of Saginaw designs. This is the first step in creating an online tour of Kimball's work that is on the Castle's website.

Elijah Sawyer: Elijah focused on the Castle Museum's Bosch studio collections. Elijah scanned and transferred negatives to acid-free folders. A primary focus of Elijah's work was creating indexes of Bosch images that had been used in yearbooks. While most images in the Bosch collection are identified, almost no images contain information about when they were taken. Elijah's work created a way for researchers to establish a date for images in the Bosch Collection. Also, Elijah worked with the C.S. Bliss papers at the Clarke Library and located materials that will be used in future interpretation in our lumbering exhibit.



VISITORS & FINANCE

The museum was honored to serve a total of **72,257** people through a combination of visitors, tours, and off-site events.

There were **14,601** total visitors to the museum.

FINANCE REPORT

		2022 BUDGET	2022 ACTUAL
INCOME	Contract Revenue	\$1,043,560.00	\$1,076,613.83
	Membership	\$15,000.00	\$19,850.77
	Gifts and Grants	\$52,100.00	\$70,441.17
	Admissions	\$4,500.00	\$12,972.84
	Miscellaneous	\$9,000.00	\$8,014.08
	Interest Income	\$1,400.00	\$929.05
	Museum Store	\$3,572.00	\$8,194.54
	Endowment	\$60,000.00	\$15,000.00
	TOTAL INCOME	\$1,189,132.00	\$1,212,016.28
EXPENSES	Personnel	\$761,218.00	\$819,007.32
	Miscellaneous	\$3,000.00	\$3,293.27
	Castle Building Operation	\$181,795.00	\$101,233.06
	Museum & Society Operation	\$108,962.00	\$100,226.54
	Grants to Out County Museums	\$104,356.00	\$104,416.97
	Annex Location	\$33,500.00	\$35,561.59
	Collections/Exhibits/Education	\$33,100.00	\$26,219.99
	Museum Store Operations	\$3,200.00	\$8,005.29
	TOTAL EXPENSE	1,229,131.00	\$1,197,964.03

**subject to audit*



MEMORIAL DONORS

Antique Warehouse Inc

Ellen Archambeau

Sally Boersma

Diane & Matt Brown

Reid Calcott III

Carolanne Killmer School of Dance

Kevin & Sonya Catterfeld

Carole Clark

Jack & Camille Cleveland

Tammy Davis

Thomas & Christine Dearlove

Marilyn Dust

Patricia Emmenecker

Carol & Robert Emrich

Gary & Nancy Fahndrich

Barb & Dick Fellrath

Arman & Deborah Grandy

Laurelynn Harris

Gerald & Marlene Hensler

James & Barbara Herweg

Linda Hobbs

Sarah & Mike Jury

Richard & Ruth King

Judith Kocks

Michael & Irene Kolleth

Catherine Konn

Michael Kowalski

Patty Larson

Nancy MacRae

John & Marty Mahar

Meredith Main

Dan & Nancy Maul

Rosalie McFall

Tom & Evelyn Mudd

Mark & Pamela Mundie

Jeanne Parks

Bill & Joy Rankin

Janet Reinig

Mike & Patty Reynolds

Roger & Mary Reynolds

Jean Richardson

Barry M. Rindhage

Rae Ann Roche

John & Barbara Russell

Saginaw Valley Antique Society

Gail Schmidt

E. Frances Siems

Bernard Spencer

George & Jan Stewart

Joyce & John Swartz

Christine Tiderington

The Train Family

Pearl Vasher

Clarellen Verdoni

Mary Lou Waddell

Charles & Beverly Wargel

Thomas Weadock

Ken & Jackie Willman

Judith Wilson



GRANTS & ADDITIONAL SUPPORT

GRANTS

MACC

Saginaw Arts & Enrichment Commission

Jazz on Jefferson

Saginaw Celebrates Summer

Kermit & Sidney Diggs

James & Linda Doane

Patty & Steve Drake

Jerold & Carol Dusek

Mary Lou Ederer

Roselynn Ederer

Robert Enszer

Bryan Faist

John & Holly Furlo

Scott & Kristi Furtaw

Jim & Anne Gaertner

Don & Laura Gerken

Pamela Grueber

George Gugino

Alan & Karen Hall

Jacqueline Hall

James & Dianne Harris

Gerald & Marlene Hensler

James & Barbara Herweg

Linda Hobbs

Paula Holevac

Karen Holtman

Susan Joynt

B & F Levantrosser

Gerald & Margaret Luczak

Susan Ludwig

Mackinaw Trail Questers

A. Michael Manzoni

Rosalie McFall

Roberta Morey

Mark & Pamela Mundie

Marcy Lynn Ng

Rose Nickodemus

Jeanne Parks

John & Jean Pendell

Bill & Joy Rankin

Rae Ann Roche

John & Barbara Russell

Don & Phyllis Simons

James & Lorna Slick

Timothy Smith

Bernard Spencer

Joyce & John Swartz

Charles Tobias

Helena & Peter Train

Kerry Vitali

Mike & Val Walderzak

Charles & Beverly Wargel

Marsha Wilhelm

Ken & Jackie Willman

Judith Wilson

Dick & Judy Zirkle

Marilyn Zolinski

Century (\$100 - \$249)

AAUW Midland Branch

June Anderson

Antique Warehouse Inc

Alan Bellile

James & Susan Berghoff

Bethany Bernthal Reindel

Roderick Bieber

Fred & Joyce Borchard

Jane Bowns

Carole Clark

Bill & Marilyn Crane

Joseph Day

Marilyn Dust

Patricia Emmenecker

Carol & Robert Emrich

Gerry & Sallie Enszer

Dan Esparza

Patricia Evans

Judith H. Farley

Barb & Dick Fellrath

SUPPORTER LEVELS

CONTRIBUTORS (\$50 - \$99)

Kathleen Allington

AmazonSmile

Patricia Bierlein

Sara E Bigley

Richard Blakeley

Wendy Braman

Ruth Braun

Barbara Brody

Ed & Nancy Brosofski

Marie Buetow

Robert & Andrea Burditt

Jack & Camille Cleveland

Kevin & Mary Corning

Tom & Culli Damuth

Tammy Davis

Harold & Susan Day

Thomas & Christine Dearlove

Janet Freeland
 John & Annette Gavit
 William & Kristine Hartl
 Dick Henning,
 Margaret Hyde
 Cheryl James
 Don Johnston
 Elynor Kazuk
 James & Nancy Kelly
 CG & Pam King
 Richard & Ruth King
 Diane & Floyd Kloc
 Ruth Ann Knapp
 Randy & Janet Knepper
 Judith Kocks
 Janet Koehler-Brooks
 Michael & Irene Kolleth
 Bryan Konieczka & Mary Baukus
 Harry Lenick
 Marilyn Ludgin
 Stanley Mack III
 John & Marty Mahar
 Meredith Main
 Dale Martin
 Mark & Debbie Mathewson
 Mayan Agency
 Ray & Mary Jo McInerney
 Tom & Evelyn Mudd
 Thomas Farnell
 Gene & Shirley Nuckolls
 R. James & Janet Paas
 William Priest
 Sylvia Reimus
 Janet Reinig
 Mike & Patty Reynolds
 Jean Richardson
 Sharon & Larry Rood

Saginaw Culture Club
 Saginaw River Maritime Historical Assc
 Anna Schaenzer
 Gail Schmidt
 Nancy Schoenow
 Leslie & Michael Schroeder
 Patricia Shaheen
 Gregory & Kathleen Skelcy
 Larry & Mary Lou Smith
 Susanne Smokoska
 Morrie & Julie Stevens
 Jack Tany
 Judy Thomas
 Les & Marion Tincknell
 Larry Toft
 The Train Higgins Family
 Betty Van Ochten
 Wakeman Funeral Home
 Christopher Walker
 Pat Williams
 Woman's National Farm & Garden Assoc

SUSTAINER (\$250 - \$499)
 Doris E. Marsh Trust
 Jim Hayes, Sr
 Brad Jarvis
 & Nathalie
 Menendes
 Donald & Cheryl
 Kuebler
 James Lewis
 Catherine
 Madigan
 Gary & Kathy
 Rummel
 Suzanne
 Skrelunas
 Valley of Michigan

Bill & Karen Zehnder

PATRON (\$500 - \$999)
 Appold, Patricia
 Ritch & Lois Cushway
 Rocky Frazier
 Glastender Inc
 Valerie Guttowsky
 Harvey Memorial Foundation
 Sarah & Mike Jury
 Kathryn Kilbourn
 Nancy MacRae
 Betty Lou Marx
 Roger & Mary Reynolds
 Saginaw Arts & Enrichment Commission
 Saginaw Valley Antique Society
 Wallace & Irene Bronner Foundation

BENEFACTOR (\$1,000+)
 Louis & Karen Constan
 Horgan Charitable Trust
 Emilie Kanitz
 Mary Johnson Irrevocable Trust
 Veda Nasser
 Stark Foundation

Thank you to the Michigan Arts and Cultural Council

The Castle Museum of Saginaw County History has been awarded two grants (operational support and capital improvement) totaling \$43,000 from the Michigan Arts and Culture Council (MACC). Each grant was awarded through the MACC peer review process and was one of 639 applications to compete for MACC fiscal year 2023 funding.

"The Castle Museum of Saginaw County History has been and continues to be a valuable asset to our community due to their commitment to preserve and share the stories of the people of Saginaw County," said State Representative Amos O'Neal.

GENERAL DONORS

AAUW Midland Branch
Kathleen Allington
AmazonSmile
June Anderson
Antique Warehouse Inc
Patricia Appold
Ellen Archambeau
Pamela Asquith
Raymond & Karen Bartels
Alan Bellile
James & Susan Berghoff
Bethany Bernthal Reindel
Roderick Bieber
Patricia Bierlein
Sara E. Bigley
Richard Blakeley
Sally Boersma
Alice Bolen
Fred & Joyce Borchard
Kenneth & Judith Bow
Jane Bowns
Wendy Braman
Ruth Braun,
Barbara Brody
Ed & Nancy Brosowski
Diane & Matt Brown
Marie Buetow
Robert & Andrea Burditt
Robert Cady
Reid Calcott, III
Carolanne Killmer School of
Dance
Kevin & Sonya Catterfeld
Carole Clark
Jack & Camille Cleveland
Louis & Karen Constan
Kevin & Mary Corning
Bill & Marilyn Crane
Ritch & Lois Cushway
Tom & Culli Damuth
Tammy Davis
Harold & Susan Day
Joseph Day
Thomas & Christine Dearlove
Kermit & Sidney Diggs
James & Linda Doane
Doris E. Marsh Trust
Patty & Steve Drake
Robert Ducharme
Jerold & Carol Dusek
Marilyn Dust
Mary Lou Ederer
Roselynn Ederer
Patricia Emmenecker
Carol & Robert Emrich
Gerry & Sallie Enszer
Robert Enszer
Dan Esparza
Patricia Evans

Gary & Nancy Fahndrich
Bryan Faist
Judith H. Farley
Thomas Farnell
Barb & Dick Fellrath
Jeff Fogo
Rocky Frazier
Freeland Womans Study Club
Janet Freeland
John & Holly Furlo
Scott & Kristi Furtaw
Jim & Anne Gaertner
John & Annette Gavit
Don & Laura Gerken
Barbara Ginn
Glastender Inc
Arman & Deborah Grandy
Leslie & Sherri Gregory
Pamela Grueber
George Gugino
Valerie Guttowsky
Alan & Karen Hall
Jacqueline Hall
James & Dianne Harris
Laurelynn Harris
William & Kristine Hartl
Harvey Memorial Foundation
Jim Hayes, Sr
Dick Henning
Gerald & Marlene Hensler
James & Barbara Herweg
Margaret T. Higgins
Linda Hobbs
Paula Holevac
Karen Holtman
Horgan Charitable Trust
Margaret Hyde
Cheryl James
Brad Jarvis & Nathalie
Menendes
Don Johnston
Susan Joynt
Sarah & Mike Jury
Sue Kaltenbach
Emilie Kanitz
Sharon Kaylor
Elynor Kazuk
James & Nancy Kelly
Kathryn Kilbourn
CG & Pam King
Richard & Ruth King
Diane & Floyd Kloc
Ruth Ann Knapp
Randy & Janet Knepper
Judith Kocks
Janet Koehler-Brooks
Michael & Irene Kolleth
Bryan Konieczka & Mary
Baukus

Catherine Konn
Michael Kowalski
Donald & Cheryl Kuebler
Patty Larson
Harry Lenick
B & F Levantrosser
James Lewis
Gerald & Margaret Luczak
Marilyn Ludgin
Susan Ludwig
Stanley Mack, III
Mackinaw Trail Questers
Nancy MacRae
Catherine Madigan
John & Marty Mahar
Meredith Main
A. Michael Manzoni
Dale Martin
Betty Lou Marx
Mary Johnson Irrevocable Trust
Mark & Debbie Mathewson
Dan & Nancy Maul
Mayan Agency
Jenny McArdle
Rosalie McFall
Beverly McFarland
Ray & Mary Jo McInerney
Roberta Morey
Tom & Evelyn Mudd
Mark & Pamela Mundie
Veda Nasser
Marcy Lynn Ng
Rose Nickodemus
Molly Ninan
Gene & Shirley Nuckolls
R. James & Janet Paas
Jeanne Parks
John & Jean Pendell
William Priest
Bill & Joy Rankin
Sylvia Reimus
Janet Reinig
Mike & Patty Reynolds
Roger & Mary Reynolds
Jean Richardson
Barry M. Rindhage
Rae Ann Roche
Sharon & Larry Rood
Gary & Kathy Rummel
John & Barbara Russell
Saginaw Arts & Enrichment
Commission
Saginaw Culture Club
Saginaw River Maritime
Historical Assc
Saginaw Valley Air Museum
Saginaw Valley Antique Society
Anna Schaenzer

Gail Schmidt
Nancy Schoenow
Leslie & Michael Schroeder
Jim & Kathy Schutt
Patricia Shaheen
E. Frances Siems
Don & Phyllis Simons
Gregory & Kathleen Skelcy
Suzanne Skrelunas
James & Lorna Slick
Larry & Mary Lou Smith
Sherrill Smith
Timothy Smith
Susanne Smokoska
Bernard Spencer
Stark Foundation
Morrie & Julie Stevens
George & Jan Stewart
Joyce & John Swartz
Jack Tany
Taymouth Township Historical
Association
Stella Thelen
Judy Thomas
Christine Tiderington
Les & Marion Tincknell
Charles Tobias
Larry Toft
The Train Higgins Family
Helena & Peter Train
Valley of Michigan
Betty Van Ochten
Pearl Vasher
Clarellen Verdoni
Kerry Vitali
Mary Lou Waddell
Wakeman Funeral Home
Mike & Val Walderzak
Christopher Walker
Wallace & Irene Bronner
Foundation
Charles & Beverly Wargel
Thomas Weadock
Robert Weise
Jean Weiss
Sherry Wielinski
Kay Wilhelm
Marsha Wilhelm
Pat Williams
Ken & Jackie Willman
Judith Wilson
Woman's National Farm &
Garden Assoc
Bill & Karen Zehnder
Elaine Zelinko
Jean Zessin
Dick & Judy Zirkle
Marilyn Zolinski

THANK YOU MEMBERS

Russell Ackerman
Kay Ackerman
Meloye Adomaitis
Catherine Agnew
Regina Alford
Richard Alger
Kathleen Allington
Kenny Alltop
Kaki Almirall
Jackie Anjakos
Patricia Jean Kirchner Appold
David Badini
Alice Baldwin
Terry Barancik
Dale Bartlett
Nancy Bartlett
Carol Bates
Sarah Bates
Dr. William Beck
Emily Beck
Jan Beckman
Alan Bellile
Jane Bellile
Robin Bellinger
Jim Berghoff
Susan Berghoff
Roberta Bidwell
Patricia F. Bierlein
Marianne Bird
Anne Birkam
Richard Blakeley
Patricia Blakeley
Matthew Bloomfield-Deweese
Keith Bloomfield-Deweese
Brenda Bluem
Honorable James T. Borchard
Fred Borchard
Joyce Borchard
Roger Borchard
Nancy Borchard
Richard Borm
Teresa Borowski
Robert Borowski
Kenneth E. Bow
Jane Bowns
Pat Brady
Wendy Braman
Ruth Braun
Barbara Brody
Ed Brosowski
Nancy Brosowski
Tiffany Brown
Jill Brumwell
Gary Bublitz
Marie Buetow
Bob Burditt
Andrea Burditt
Ron Burk
Aileen Byrne-Harden

Dr. Robert Cady
Dr. Reid J. Calcott
Mary Lou Call
Rose Marie Canter
Carol Chisholm
Eileen Cieszlak
Bruce Clark
Bud Clement
Rosemary Clement
William Clynes
Patricia Clynes
Carolyn Cody
Deana Coleman
Patricia Colthurst
Michael Colucci
Kevin Corning
Mary Rose Corning
Jeffrey Cottrell
William Crane
Marilyn Crane
Maxine Dallaire
Culli Damuth
Lyssa Darabos
Ashley Davis
Christina Dawe
Harold Day
Susan Day
Jan Day
Tim Dean
Cathy Dean
Marty Debozy
Nancy Deisig
Richard DePlonty
Kathleen DeRosier
Barbara Dewey
Louis Diechman
Valerie Dieters
Gary Diffin
Sidney Diggs
Kermith Diggs
Gerry Dillon
Vickie Dillon
James Doane
Richard Dreist
Mari Drysdale
Robert DuCharme
Marilyn DuCharme
Steve Duncan
Michelle Duncan
Jerry Dusek
Carol Dusek
Marilyn Dust
Dick Ederer
Diane Ederer
Roselynn Ederer
Mary Lou Ederer
Marisa Elliott
Katherine Ellison

Patricia Emmenecker
Dr. Robert L. Emrich
Robert Enszer
H. Dawn Escamilla
Daniel Esparza
Patricia Evans
Walter Ewing
Bryan Faist
Shirley Fanger
Judith Farley
Thomas Farnell
Rick Farrand
Mark Faucher
Clara Fehrman
Monica Feltson
Jeanne Feyedelem
Debra Finger
Steven Fisher
Ellen Fisher
Katheryn Fitzpatrick
Daniel Fitzpatrick
John Flores
Kimberly Fobear
Joann Frank
Rocky Frazier
Janet Freeland
Amy French
John Frenzel
Brandon Fryter
Elizabeth Funez
Holly Furlo
John Furlo
Kristi Furtaw
Jim Gaertner
Rafael Garcia
David Gaudreau
Suzanne Gaudreau
John Gavitt
Annette Gavitt
Patsy A. Geeting
Jules Gehrke
Laura & Don Gerken
Marlee Goodrich
Dawn Goodrow Hilloer
Connie Goschka
Tiffany Gossett
Margaret Gottlieb
Michael Grabowski
Tammy Grandy
Wayne Greenia
Leslie Gregory
Sherri Gregory
Dan Groom
Laurie Grzesiak
Amanda Gubbins
Dr. & Mrs. G. Gugino
Joyce Guttowsky
Jack Guttowsky
Valerie Guttowsky

Cheryl Hadsall
Jackie Hall
Alan Hall
Karen Hall
Anne Hamilton
Phyllis Harper
Jim Harris
Dianne Harris
Hannah Harris
William Hartl
Kristine Hartl
Jim Hayes
Joanne Hayner
Larry Hayner
Susan Heckman
Lynn Heitkamp
Chip Hendrick
Richard Henning
Irene Hensinger
Raymond Herek
Druane Herek
Margaret Higgins
Bob Hillier
Historical Society of
Bridgeport
Allison Hof
Hon. David Hoffman
Ann Hoffman
Julius Hohensee
Jane Hohensee
Isabella Holmes
Karen Holtman
Charles Hoover
Robert Horny
Dick Humphreys
Amy Hussar
Margaret Hyde
Cheryl James
John James
Brad Jarvis
Donald Johnston
Michael Judd
Jerry Kabat
Beverly Kabat
Nisreen Kais
Sue Kaltenbach
Pat Kaltenbach
Adam Kandulski
Brandon Kandulski
James Kelly
Nancy Kelly
Robert Kendrick
Sheryl Kendrick
Richard King
Ruth Kin
Ron Kinsman
David Kipfmiller
Floyd Kloc

Diane Kloc
Dolores Kluck
Ruth Ann Knapp
Randy Knepper Family
Janet Knepper Family
Judi Kocks
Janet Koehler-Brooks
Bryan Konieczka
Catherine Konn
Elaine Kraenzlein
Marilyn Krogman
Jean Kuebler

Richard Kusowski
Edward Langham
Gary Lapprich
Dara Lapprich
Pauline Lawrence
Glendorah Lawrence
Kim Leach
Dr. Michael Ledtke
Sherry Ledtke
Doug Leffler
Marilyn Leffler
Harry Lenick
Dwight Lewis
Roger Little
Myrna Little
Gerald Luczak
Margaret Luczak
Susan Ludwig
Ryan Lyden
Yvonne MacArthur
Stanley Mack III
Mackinaw Trail Questers 562
Nancy MacRae
Arlene Maczik
John Mahar
Marty Mahar
Meredith Main
Bruce Makinen
Mary Makinen
Constance Mancillas
Dr. A. Michael Manzoni DVM
Anne Marks-Gaertner
Dale Martin
Betty Lou Marx
Rosalie McFall
Ray McInerney
Ted Metiva
Alyssa Mikolanz
Eugene H. Miller
Craig Monahan
Debbi Monahan
Roberta Morey
Timothy Morse
Dan Mrozinski
Monteah Muhammad
Jim Murphy

Kathy Murphy
Viloshinee Murugan
Jack Nash
Susan Nelson
Ray Nelson
Jayne Nestell
Rose Nickodemus
G. Thomas Nolan
Tim Novak
Gene Nuckolls
Richard O'Dell
Marna Oldenburg
Michael Paul Olson
Catherine Ostrowski
Jim Paas
Janet Paas
Robert Packard
Kathy Packard
Shirley Pagenkopf
Betty Paquette
Mary Ann Parker
Timothy Parks
Barbara Paveglio
Geoff Pelkey
Lloyd Pender
Lynn Pender
Sonny Perez
Sarah Perkins
Leona Perry
Jim Petteys
Deborah Plyler
Dan Poag
Kayla Poe
Dick Pope
Jan Pope
Adam Priem
Gordon Provenzano
Karen Provenzano
Dawn Prueter
Thor Rasmussen
Joylynn Rasmussen
Melissa Rau
Sylvia Reimus
Wes Reinbold
Bethany Reindel
Janet Reinig
Roger Reynolds
Mary Reynolds
Jean Richardson
Richard Riefe
Barry M. Rindhage
Autumn Rivard
Janet A. Roekle
Jerry Roethlisberger
Ronald Roggow
Leo Romo
Sharon Rood
Larry Rood
Gary Rummel

Kathy Rummel
Susan Sadenwater
Saginaw Valley Air Museum
Allen Salyer
Elena Sanchez
Gal Sarmiento
Judy Sarmiento
Janeen Schaeding
Heather Schlicker
Nancy Schoenow
Janice H. Schury
Jim Schutt
Kathy Schutt
Sandy Schwan
Art Schwan
Elaine Schwan
Demetrios Scott
Sonia Severin
Patricia Shaheen
Maliha Shaikh
Jim Shannon
Rose Shannon
Gerald Shreve
Arloa Shreve
Jim Slick
Lorna Slick
Timothy Smith
Nancy Smith
Mary Lou Smith
Larry Smith
Sherrill Smith
Michael Smith
Kathi Smith
Susanne Smokoska
Jeff Sommer
Michael J. Sovansky
Bernard Spencer
Florence Spencer
Jon Spendlove
Joseph Stankiewicz
Morrie Stevens
Julie Stevens
Tom Stevens
Jill Stevens
Mary Stewart
George Stewart
Jan Stewart
Kathleen Stuller
Ryan Sullivan
Patricia Symons
Mary Szagesh
Jack Tany
Sam Tany
Aubrie Smith
Lynda Thayer
The Mayan Agency
Michael Thom
Susan Thom

Judy Thomas
Cindy Thompson
J Timmons
Leslie Tincknell
Marion Tincknell
Charles Tobias
Larry Toft
Gail Toft
Joseph Trombley
Thomas Trombley
Dave Tuskey
John Van Arsdale
Carol Van Arsdale
Betty J. Van Ochten
Don Van Steenkiste
Jennifer Vannette
Matthew Vannette
Frank Vaydik
Mary Ellen Vaydik
Jack Visuri
Liz Visuri
Kerry Vitali
Mary Vogelpohl
Mike Walderzak
Val Walderzak
Christopher Walker
Michael Walker
Jim Wallace
Elizabeth Wallace
Thomas J. Weadock
Mary Kaye Garstecki Weaver
Jonathan Webb
Anne Webb
Dan Weigl
Bob Weise
Mary Jo Weise
Sherry Wielinski
Della Wilder
Kay Wilhelm
Marsha Wilhelm
Patricia Williams
Ken Willman
Jackie Willman
Judy Wilson
Joseph Worrall
Mary Worrall
Ashley Zehnder
Shawn Zehnder
Elaine M. Zelinko
Jean Zessin
Dick Zirkle
Judy Zirkle
Marilyn Zolinski



THANK YOU!

